

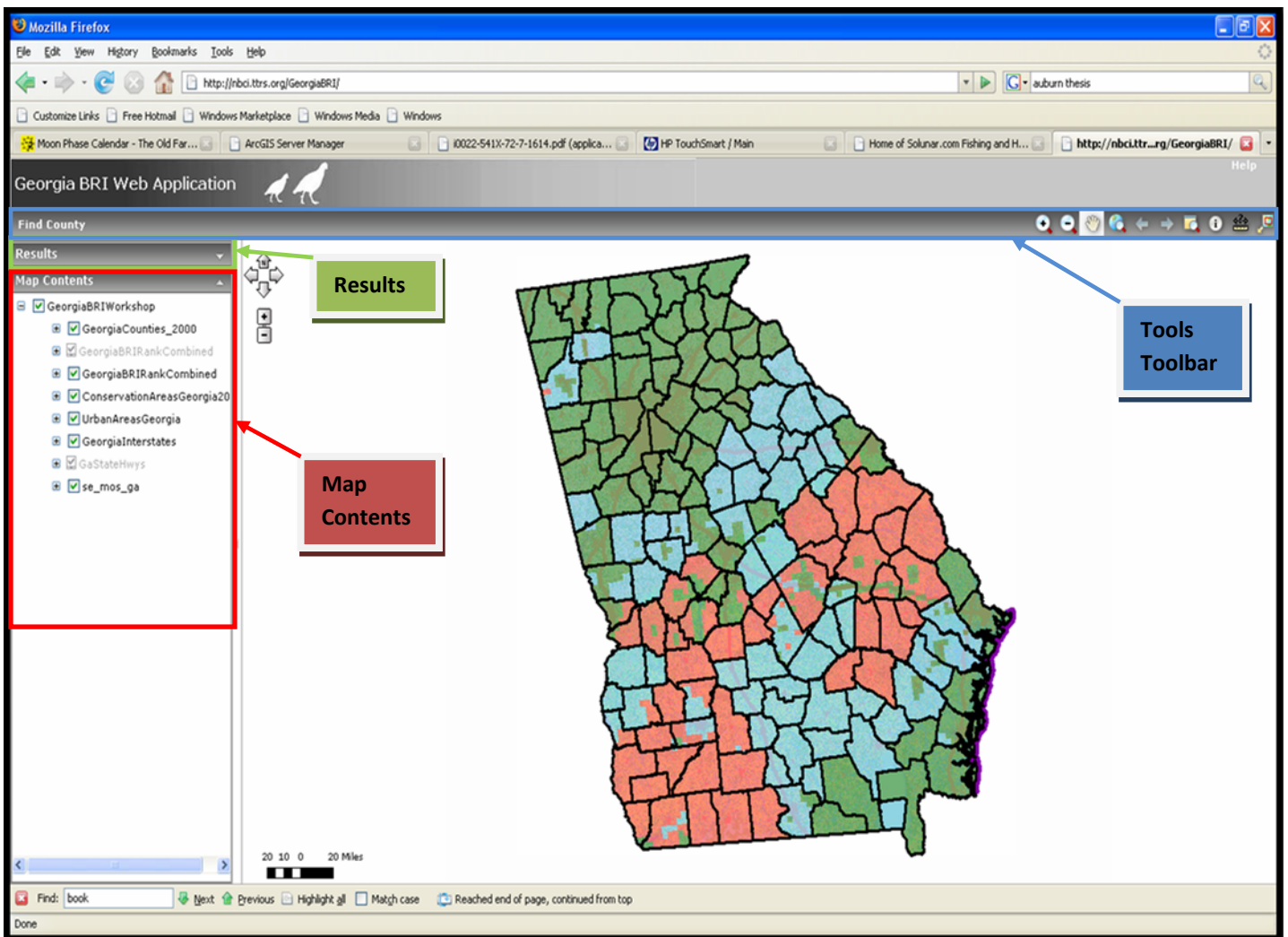
BRI WEB MAPPING APPLICATION USER'S GUIDE:

GENERAL USAGE & MAKING CHANGES

GENERAL USAGE

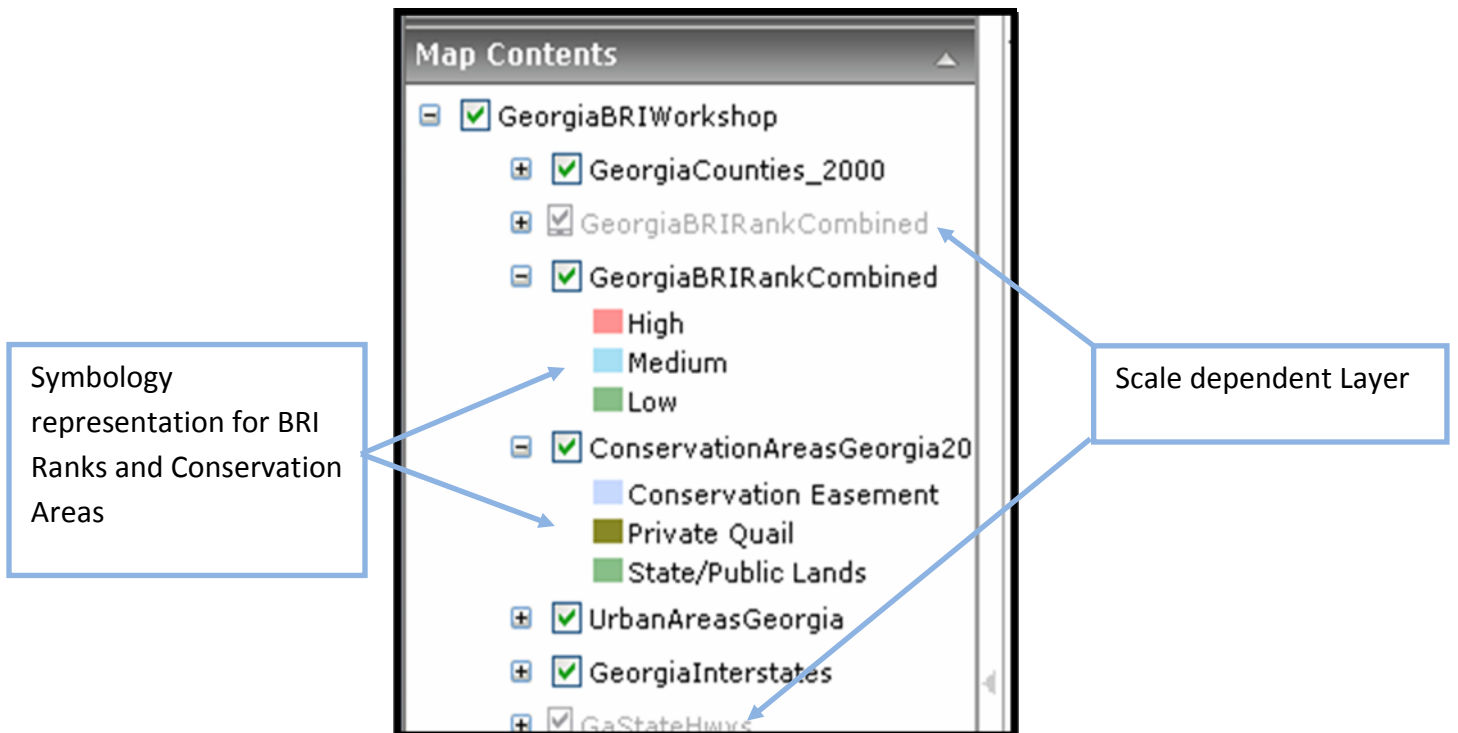
🖱 Viewing the Web Application

1. Open an Internet Browser (Mozilla Firefox, Internet Explorer, etc.)
2. Type in the URL and hit enter to open the website. <http://nbcittrs.org/GeorgiaBRI/>
 - a. Alternatively, go to <http://nbcittrs.org/NBCI/workshop.htm> to find your state's web-link.
3. You should see something like (without the colored boxes):

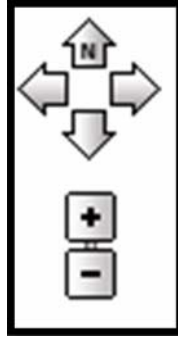


🖱️ Familiarity with Web Application Display/View Setup

1. The Web Application View has docked (embedded) windows to facilitate navigation and increase usability. These include:
 - a. A Results display (see green rectangle above) – this displays the results of identify and query functions.
 - b. A Map Contents display (see red rectangle above) – this shows the layers available for browsing.
 - i. The check boxes next to each layer allow you to control the visible layers in the map view; un-checking one of these will turn off the layer (Un-checking the map layer, named **GeorgiaBRIWorkshop**, will turn off all the layers).
 - ii. Notice the layer names in black versus the layer names in light gray. The light gray layers are scale dependent layers which simply means that they are not viewable until you zoom into to a specific scale. I have set these to reduce refreshing time and mitigate viewing too much spatial information at one time.
 - iii. There are also + (or -) boxes next to each layer. Clicking on these will allow you to view the respective symbology for each layer.

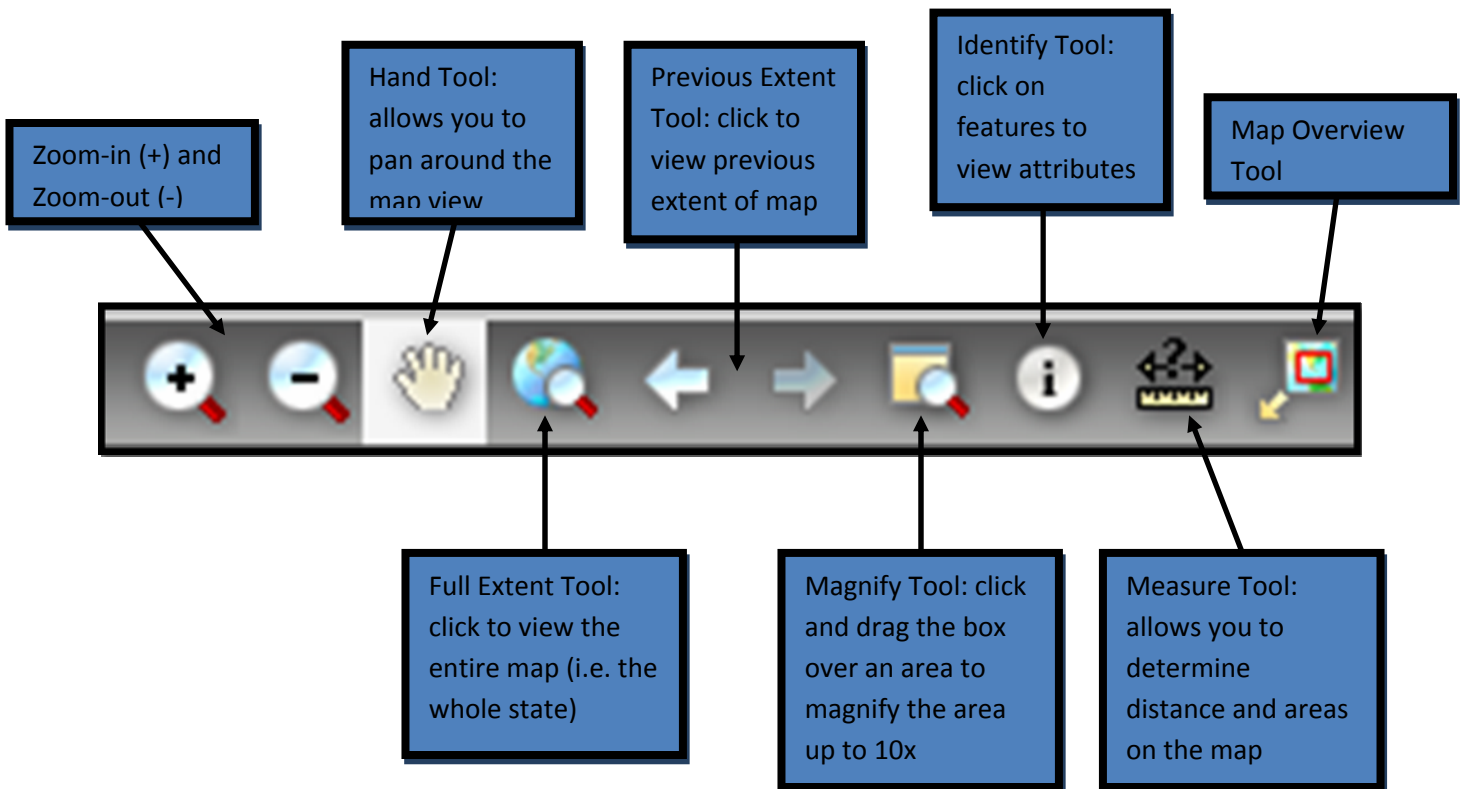


2. There is also a navigation, zoom-in and zoom-out tool:



Simply move the cursor over the buttons and hold down the left-mouse button to move North, West, East, or South and to Zoom in (+) and out (-).

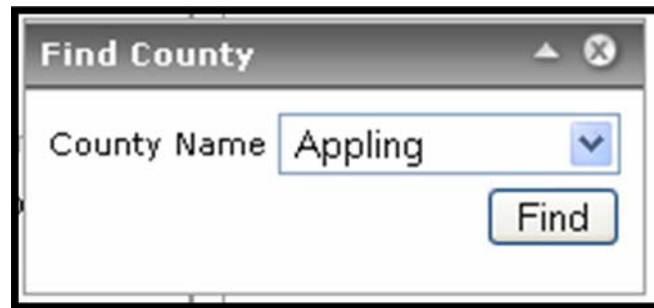
3. There is also a toolbar with various tools (see blue rectangle above) I have included to aid in navigation and editing located just below the Title banner. Below is the names of the tools; we will discuss the functionality of these tools later in the editing section. You may or may not use these tools but, if used, can make the process more efficient.



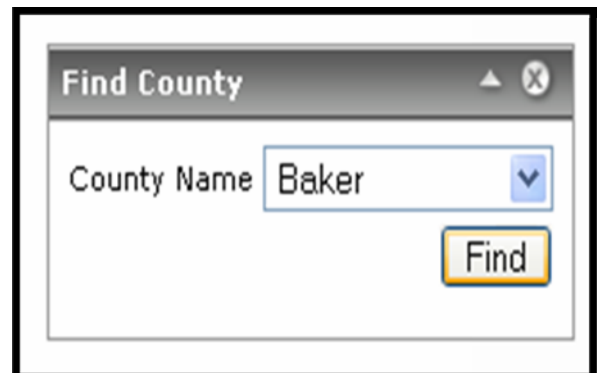
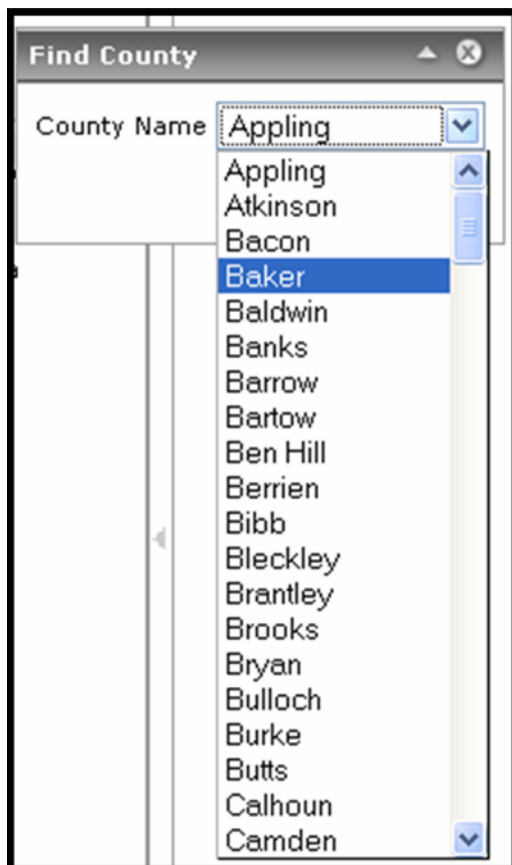
ASSESSING THE ACCURACY OF BIOLOGIST RANKS (BRI) & MAKING CHANGES

☞ Choose a County and Zoom to it

1. Click on “*Find County*” located on the tool bar (located above results and below title banner). This should spawn a window to pop-up:



2. Choose a designated county, for which you would like to assess the BRI, from the drop-down menu and click the “*Find*” button (here I have chosen Baker county):



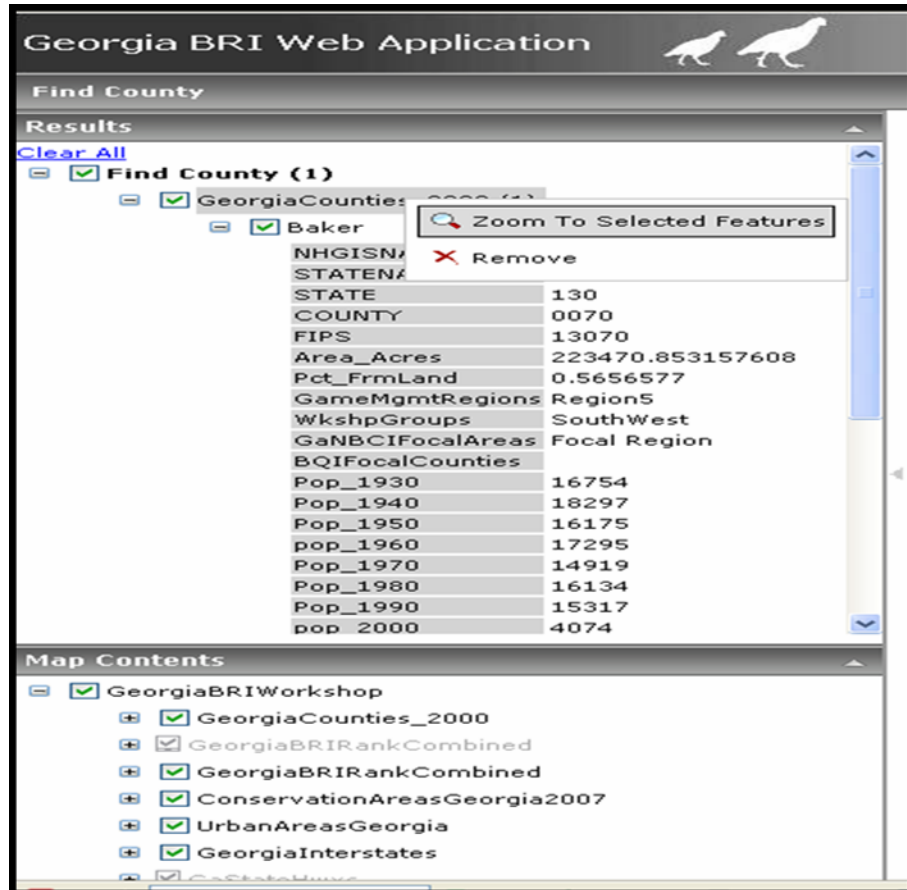
3. After clicking Find, the county attribute information should appear in the results window as shown below:

The screenshot displays the 'Georgia BRI Web Application' interface. At the top, there is a header with the application name and two bird icons. Below the header is a 'Find County' section. The main area is titled 'Results' and shows a tree view of search results. The tree is expanded to show 'Find County (1)', which contains 'GeorgiaCounties_2000 (1)', which in turn contains 'Baker'. An arrow points from a note box to the 'Baker' entry. To the right of 'Baker', a list of attributes and their values is displayed. Below the results is a 'Map Contents' section with a tree view of map layers, including 'GeorgiaBRIWorkshop', 'GeorgiaCounties_2000', 'GeorgiaBRIRankCombined', 'ConservationAreasGeorgia2007', 'UrbanAreasGeorgia', and 'GeorgiaInterstates'.

Attribute	Value
NHGISNAM	Baker
STATENAM	Georgia
STATE	130
COUNTY	0070
FIPS	13070
Area_Acres	223470.853157608
Pct_FrmLand	0.5656577
GameMgmtRegions	Region5
WkshpGroups	SouthWest
GaNBCIFocalAreas	Focal Region
BQIFocalCounties	
Pop_1930	16754
Pop_1940	18297
Pop_1950	16175
pop_1960	17295
Pop_1970	14919
Pop_1980	16134
Pop_1990	15317
pop_2000	4074
Pop_2007	3781

NOTE: If you would like to view the attributes for the county you must first click on the + sign to expand the list., or conversely click the – sign to collapse.

- You can then right-click on the county layer, in this case that is **GeorgiaCounties_2000** layer, in the results and select “*Zoom to Selected Features*” to zoom to the all selected features (counties). Alternatively, right click on the specific county name, e.g. **Baker**, below the **GeorgiaCounties_2000** layer and choose “*Zoom To*” to zoom only to Baker county.



- At this point you can either view the attributes for the county or go ahead and begin assessing the ranks assigned for that particular county.
- Uncheck the county, i.e. here it is **GeorgiaCounty_2000**, selection in the RESULTS window (this removes the county selection you just made) or just click clear all to remove that selection from the results window view.

🖱️ Assessing Biologist Ranks at the grid-cell level

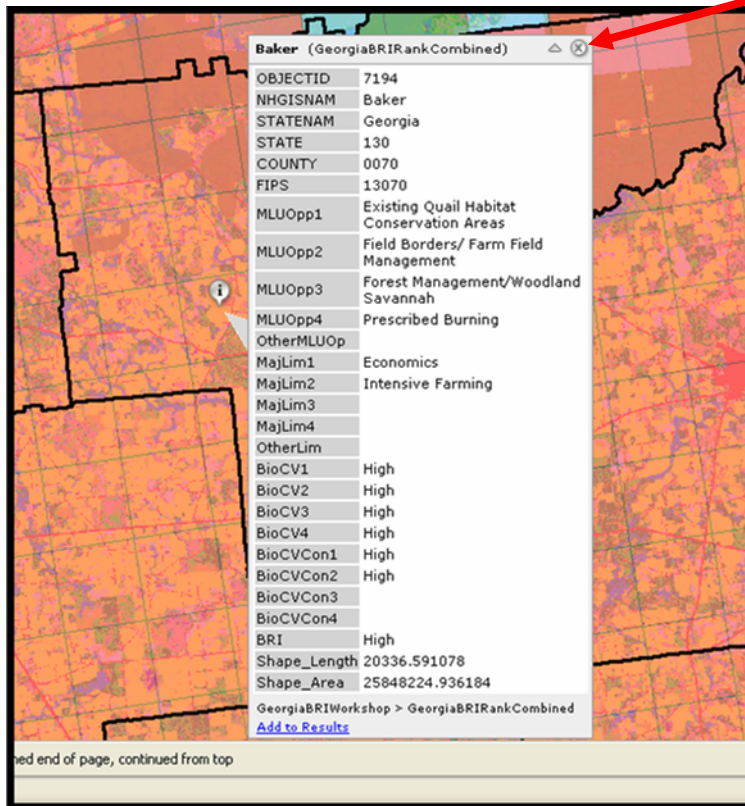
- Click the identify button and then click a particular grid cell of interest.

- A pop-up window should open. Select from the BRI Grid, in this case it is called **GeorgiaBRIRankCombined** but in most cases it will be called <statename>_BRI_Grid layer from the drop-down menu:



Note: this drop-down menu is not visible until you hover the mouse over it

- After selecting the BRI Grid, here: **GeorgiaBRIRankCombined**, layer (from above) the attribute table for the selected grid should open up. Here you can view the Rank (BRI_Rank). Remember also that the symbology for the layer shows you that red, blue and green code for high, medium and low, respectively. You can also view the other ranking information provided such as the major land use opportunities (MLUOpp1, MLUOpp2...) and constraints (MajLim1, MajLim2, ...) and their associated confidence values (BioCV = biologist confidence value for MLU opportunities; BioCVCon = biologist confidence values for the MLU constraints).



Note: to close this box **right-click** on the x!! If you use left-click you will identify another BRI-grid!

10. Important TIP: If you are viewing/assessing many grid cells, which will likely be the case, the fastest (most efficient) method is to turn off the county layer, **GeorgiaCounties_2000**. Remember to do this you simply need to uncheck it in the Map Contents window. After doing this you should be able to click very quickly on one grid cell at a time and record the relevant information as needed. The only drawback to turning off the county layer is the bolded county boundary will no longer be visible. In fact, you may choose to turn-off all layers except the one you are most interested in.

11. If you believe the rank should be changed for an individual cell or group of cells you will need to record the *County, ObjectID* (this is unique to each cell), and any major land use opportunities and constraints you deem relevant and not already associated with the cell or group of cells. To facilitate the recording of information I have provided a data sheet on the next page. You may additionally wish to print out the map of a particular county and shade in the cells as you see fit and itemize your changes. ***Note: the easiest, preferred, and most efficient method for editing is to view the BRI ranks and make note of necessary changes and participate in the webinar-conference.***

12. We suggest you work through only the county or counties that you are most familiar with.

13. A final tip is to open the web application in 2 separate browsers viewing them both simultaneously side by side (this works really well if you have 2 monitors or a very large monitor); turn off the **GeorgiaBRIRankCombined** layer to allow you to see the other layers (e.g. land cover, highways) more clearly.

PLEASE DO NOT HESITATE TO EMAIL ME (theron@ttrs.org) WITH ANY CORRECTIONS, ERRORS, OR COMMENTS THAT YOU MAY ENCOUNTER. ANY COMMENTS AND SUGGESTIONS THAT WILL HELP TO MAKE THIS PROCESS MORE EFFICIENT AND LESS PAINFUL ARE VERY MUCH WELCOMED. THANKS AGAIN FOR YOU HELP!!

BIOLOGIST RANKING INFORMATION (BRI) DATA SHEET

Your Name: _____ Your Organization: _____

Your Email address: _____

COUNTY: _____

OBJECTID(s): _____

Major Land Use Opportunities (CV)

- Forest Mgmt/Woodland Savannah ()
- Conversion of Pasture to Warm-Season Grasses ()
- Field Borders /Farm Field Mgmt. ()
- Prescribed Fire ()
- Restoration of Native Longleaf Pine ()
- Existing Conservation Areas ()
- Existing Quail Habitat Conservation Areas ()
- Reclamation of Mine Lands ()
- Grassland, Prairie, or Glade Restoration
- Brush Management ()
- General CRP sign-up – whole field ()
- Existing Bobwhite Populations ()
- Other Species Management ()
- Other ()

Major Land Use Constraints (CV)

- Inappropriate Vegetation Cover Types ()
- Small Farm/Landholding Size ()
- Current or Future Urbanization ()
- Difficulty of Fire Use ()
- Limited Financial Assistance or Landowner Programs ()
- Intensive Farming ()
- Sod-forming Grasses ()
- Economics ()
- Industrial Forest Ownership ()
- Lack of Funding/Staff on Publics Lands to Implement Habitat Practices ()
- Low Bobwhite Pop'n levels ()
- Historical Species Range Limit ()
- Other species Management ()
- Low Adoption ()
- Grazing Pressure ()
- Other () _____

Using this Data Sheet:

First, please record your personal contact information (Name, organization/affiliation, and email). Then list the county you are ranking (you may have more than one data sheet for a single county or only a single data sheet for multiple counties). List the OBJECTID for a cell (or multiple OBJECTIDs for a group of cells that will be ranked the same) that you wish to make a suggested BRI change for. Check the appropriate major land use opportunities and constraints and assign appropriate biologist confidence value (H, M, L for High, Medium, and Low, respectively) that you believe are best suited for the designated cell(s) that you are ranking and you may list any additional opportunities or constraints not already included in the list.

Upon completion send via mail or email it to me: theron@ttrs.org; 13093 Henry Beadel Dr, Tallahassee, Florida 32312.